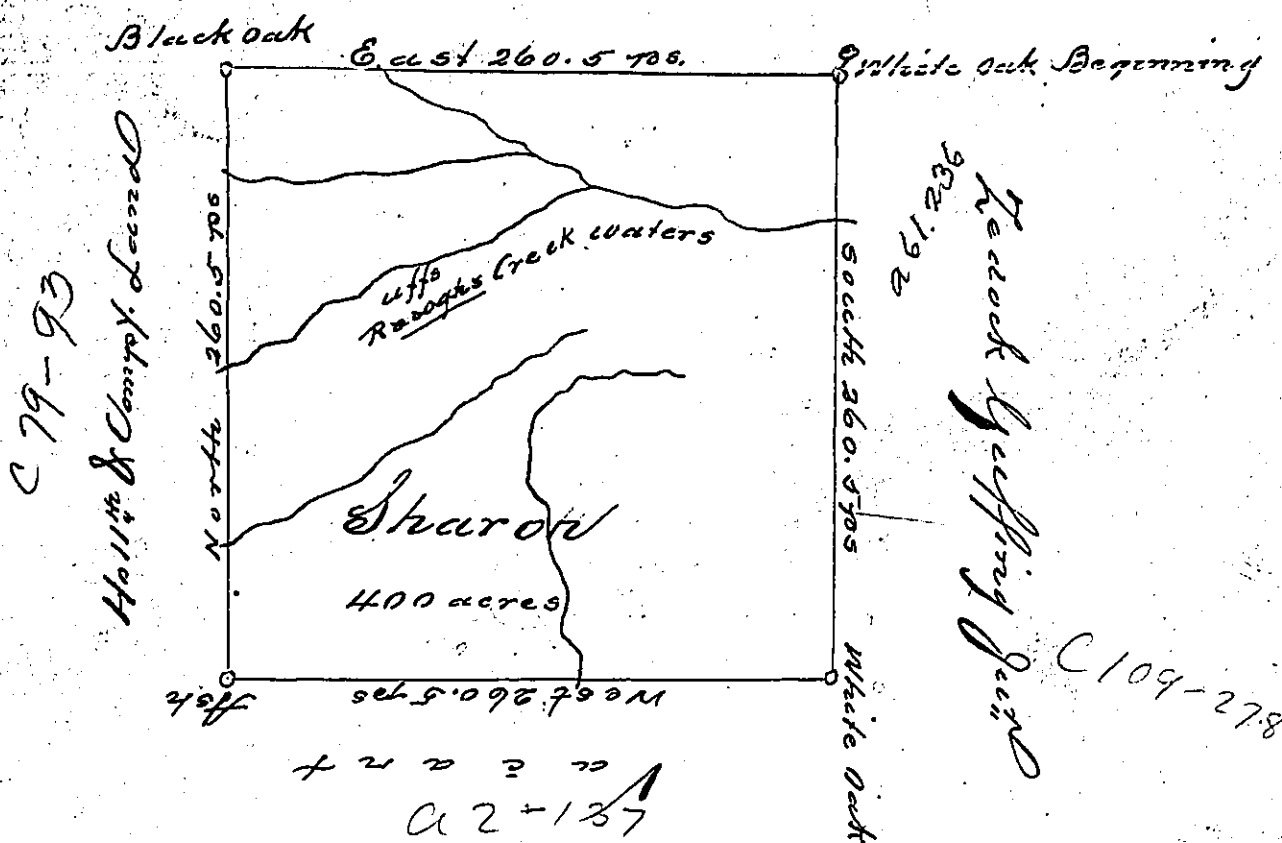


Aron Gray



The above is a Draught of a Survey made the February 16th day 1785.
 In pursuance of a warrant granted to Moses Gray November
 8th 1784. Situated on the Waters of Reff's Creek. In Washington
 County. Called Sharon. Containing four Hundred acres with the
 usual allowance

John Lukens Esq
 S. G. P

David Redick D. J.

IN TESTIMONY that the above is a copy of the original remaining on file in
 the Department of Internal Affairs of Pennsylvania, made
 conformably to an Act of Assembly approved the 16th day of
 February, 1833; I have hereunto set my Hand and caused
 the Seal of said Department to be affixed at Harrisburg,
 this second day of January 1900

James W. Latta
 Secretary of Internal Affairs.